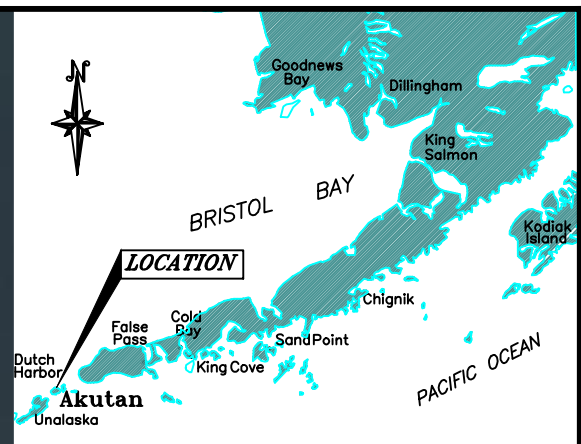


AKUTAN HARBOR



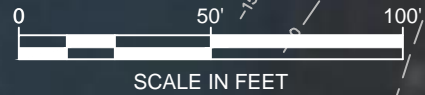
VICINITY MAP

Sheet pile wave barrier with catwalk

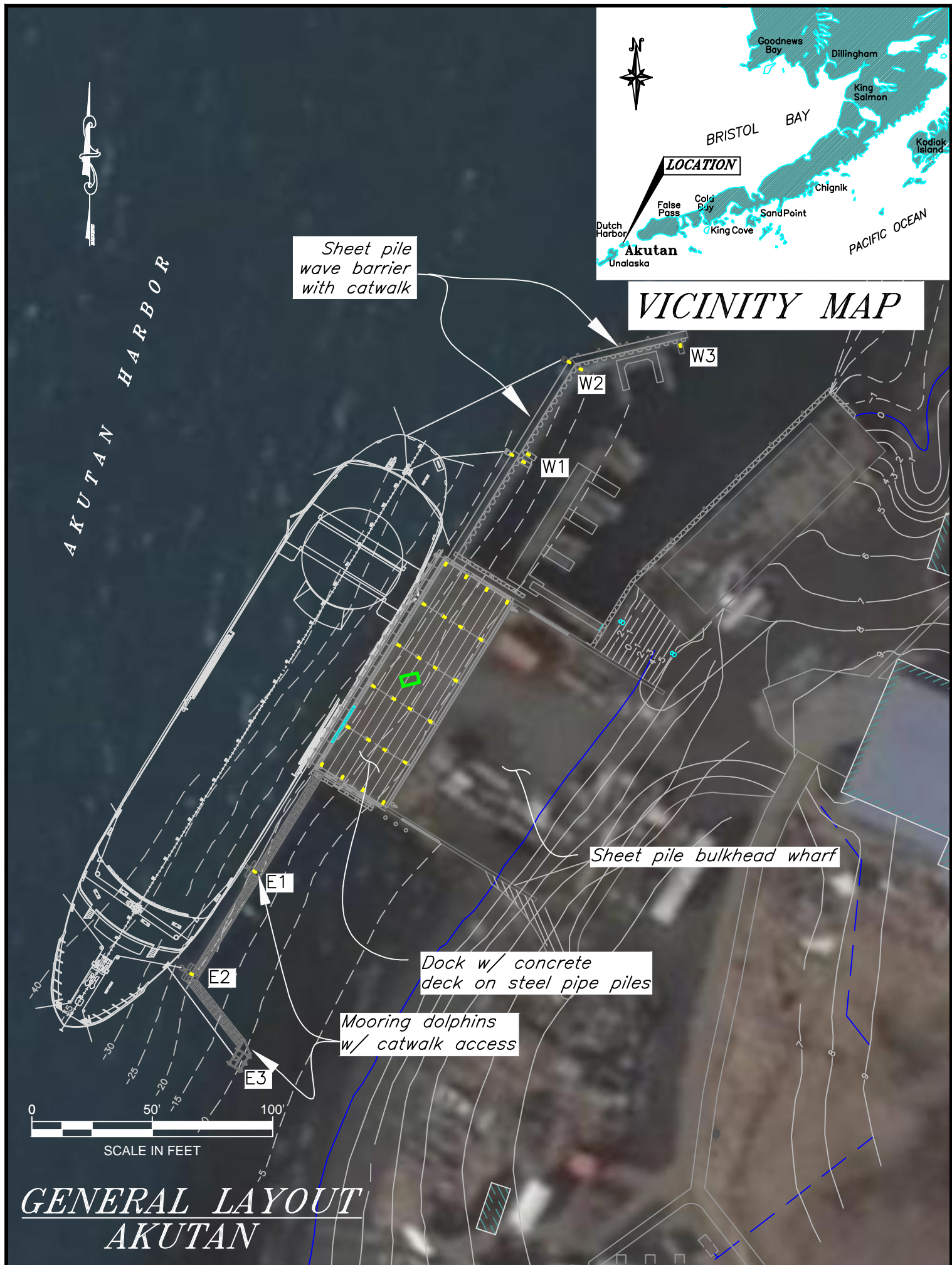
Sheet pile bulkhead wharf

Dock w/ concrete deck on steel pipe piles

Mooring dolphins w/ catwalk access



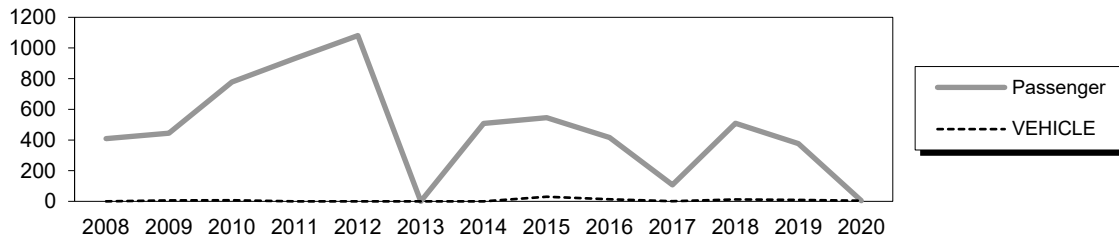
GENERAL LAYOUT
AKUTAN



Akutan City Dock

Owner: Aleutians East Borough
Terminal Manager: 907-381-1366 – Brett Willis, Harbormaster

Terminal Description: The M/V TUSTUMENA docks in Akutan during its May through September Aleutian Chain trips. AMHS has previously discharged only passengers at this facility; however, sailings now include some vehicles. The Akutan City Dock is a platform dock constructed of concrete panels, steel pile caps and steel support piling. Abutting the back of the dock is an earth filled sheet pile bulkhead for the full length of the dock. There are two mooring dolphins with fender units on each side of the dock. In line with the western dolphins is a sheet pile wall that acts as a wave barrier for a small boat harbor, with a 50-foot extension installed in 2005. The past 12 years of total passenger and vehicle traffic at Akutan is shown below. Akutan had no/low ferry service in summers 2013 & 2017 while the M/V Tustumena was in the shipyard for repairs. The global pandemic caused the decline in 2020.



The most recent above water survey was completed on September 12, 2022. The underwater inspection occurred on July 28, 2019.

Vessels	
Name	Berthing, Alignment
Tustumena	Port / Starboard

Tidal Data	
Highest Observed	6.7
MHHW	3.7
MHW	3.4
MLLW	0
Lowest Observed	-2.8

Terminal Building
This facility does not have a terminal building.

Generator & Building
This facility does not have a generator on-site.

Utilities @ Dock
There are no utilities at the City Dock.

Uplands	
Short-Term Parking:	N/A
Long-Term Parking:	N/A
Staging Area:	N/A
Paint Striping:	No
Driving Surface:	Asphalt/Gravel

City Dock - #1946	
Dimension:	38' wide x 103' long
Type:	Dycore Concrete Panels Deck
Year Built:	1992
Support:	(6) Steel HP Pile Caps & (24) 16" dia Steel Pipe Piles
Coating:	Coal Tar Epoxy
Fenders:	(21) - 16" dia Steel Pipe Piles
Fender Face:	UHMW wear strips
Anodes:	Yes
Lighting:	Light poles, east and west ends of dock
Condition:	Fair
Load Posting Sign:	Single Axle 7 Tons; Tandem 12 Tons

Sheet Pile Walls							
Section	Length	Type	Coating	Anodes	Built	Cond.	Notes
1	90'	Z-Section	None	No	2002	Fair	
2	100'	Z-Section	None	No	2005	Fair	

Dolphins							
Dolphin	Dolphin Piles	Fender Support	Fender Face	Anodes	Built	Cond.	Notes
W3	1B, 1V	-	-	No	2005	Good	
W2	1B, 1V	2V	Plastic Rub Strip	No	2002	Good	
W1	2B, 2V	2V	Plastic Rub Strip	No	2002	Good	Rubber Fenders & steel wale are severely damaged.
E1	3B	1H	Rubber donut, vertically mounted	Yes	1993/2015	Fair	Fender re-built in '15
E2	3B	1H	Rubber donut, vertically mounted	Yes	1993/2015	Fair	Fender re-built in '15; Red Navlight
E3	5B	-	-	Yes	2015	New	

Catwalks / Gangways								
#	From Struct.	To Struct.	Length / Style	Built	Safety Chains	Cond.	Lighting	Notes
C1	W3	W2	45' / Catwalk	2005	Yes	Good	None	Catwalk is integral with sheet pile wave barrier
C2	W2	W1	90' / Catwalk	2002	Yes	Good	None	Catwalk is integral with sheet pile wave barrier
C3	W1	Dock	90' / Catwalk	2002	Yes	Good	None	Catwalk is integral with sheet pile wave barrier
C4	Dock	E1	50' / Catwalk	1993	Yes	Fair	None	
C5	E1	E2	50' / Catwalk	1993	Yes	Fair	None	
C6	E2	E3	30' / Catwalk	2015	Yes	Good	None	

Projects			
Year	Project #	Project Name	Description
1982	N/A	Akutan Public Dock	Original construction of the City dock and sheet pile retaining structure. Plans not on file.
1993	N/A	Akutan City Dock Modifications	Install the west dolphins E1 & E2 and catwalks.
2002	N/A	Akutan City Dock Modifications	Installed section 1 of the west sheet pile wall around the harbor, dolphins W1 & W2, and catwalk.
2005	N/A	Akutan City Dock Modifications	Installed section 2 of the west sheet pile wall around the harbor, dolphin W3 and catwalk.
2015	67745	Akutan City Dock Improvements	Raised the height of the existing fender system, installed a new mooring dolphin on the east side and made other miscellaneous repairs

GENERAL FACILITY EVALUATION

Facility Component	Rating
Uplands	6
Sheet Pile Bulkhead	5
Dock	5
Dophins	5
Fendering System	5

9	EXCELLENT CONDITION
8	VERY GOOD CONDITION - no problems noted
7	GOOD CONDITION - some minor problems.
6	SATISFACTORY CONDITION - structural elements show minor deterioration
5	FAIR CONDITION - all primary structural elements are sound but may have minor corrosion, cracking or chipping. May include minor erosion on bridge piers.
4	POOR CONDITION - advanced corrosion, deterioration, cracking or chipping. Also significant erosion of concrete bridge piers.
3	SERIOUS CONDITION - corrosion, deterioration, cracking and chipping, or erosion of concrete bridge piers have seriously affected deck, superstructure, or substructure. Local failures are possible.
2	CRITICAL CONDITION - advanced deterioration of deck, superstructure, or substructure. May have cracks in steel or concrete, or erosion may have removed substructure support. It may be necessary to close the bridge until corrective action is taken.
1	"IMMINENT" FAILURE CONDITION - major deterioration or corrosion in deck, superstructure, or substructure, or obvious vertical or horizontal movement affecting structure stability. Bridge is closed to traffic but corrective action may put back in light service.
0	FAILED CONDITION - out of service - beyond corrective action
N	Not applicable

For a copy of the latest facility inspection reports contact the AK DOT&PF Marine Design Department. Contact information is located in the Comments and Feedback section.